



**Independent Ag**  
EQUIPMENT

# Digital Scouting Report

Version 1.0

**Flight name:** SipeFarms 14Jul16 120m  
**Location:** Sipe Farms (-105.020951605, 40.1924284659)  
**Date:** 2016-07-14

## Independent Ag Field Report for 2016-07-14

Independent Ag uses the latest drone technology coupled with cloud supercomputing algorithms to provide an accurate, on-demand, view of what is going on in a field.

**Photos taken** 91  
**# Cameras stitched** 88  
**Est. Flight altitude** 60 m  
**Oversampling** 1.2x  
**Min shutter** 0.821 ms  
**Max shutter** 1.329 ms  
**Min aperture** F/2.8  
**Max aperture** F/2.8  
**Min ISO** 100  
**Max ISO** 100  
**Camera model** FC300S

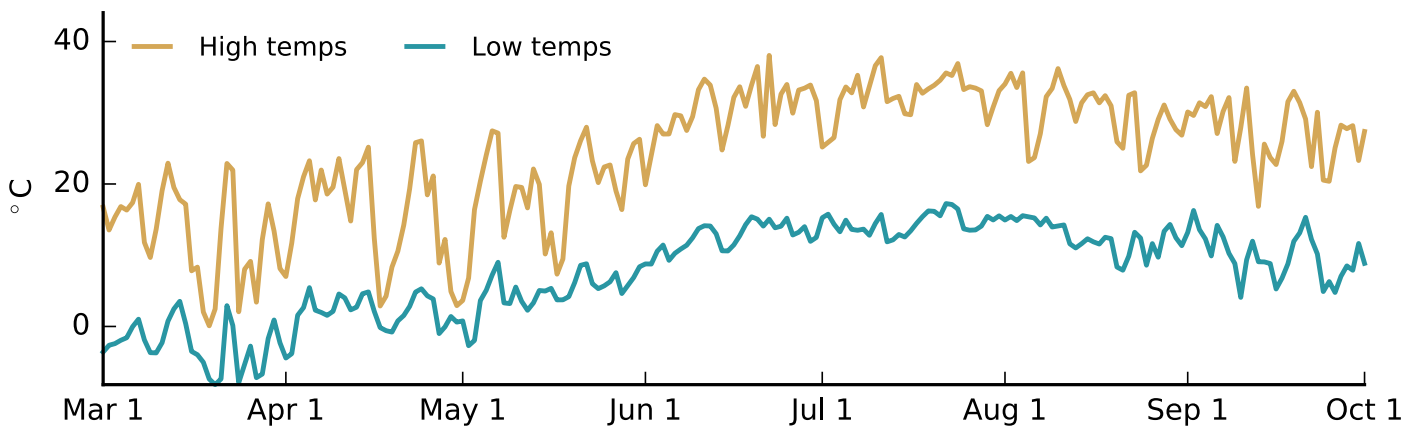


# Independent Ag Field-level Weather Report

The Independent Ag field weather report is designed to provide the data that growers need. It provides accurate weather data for this specific location spanning from 2016-03-01 to 2016-10-01. Independent Ag weather provides additional context to get the most from the drone imaging results.

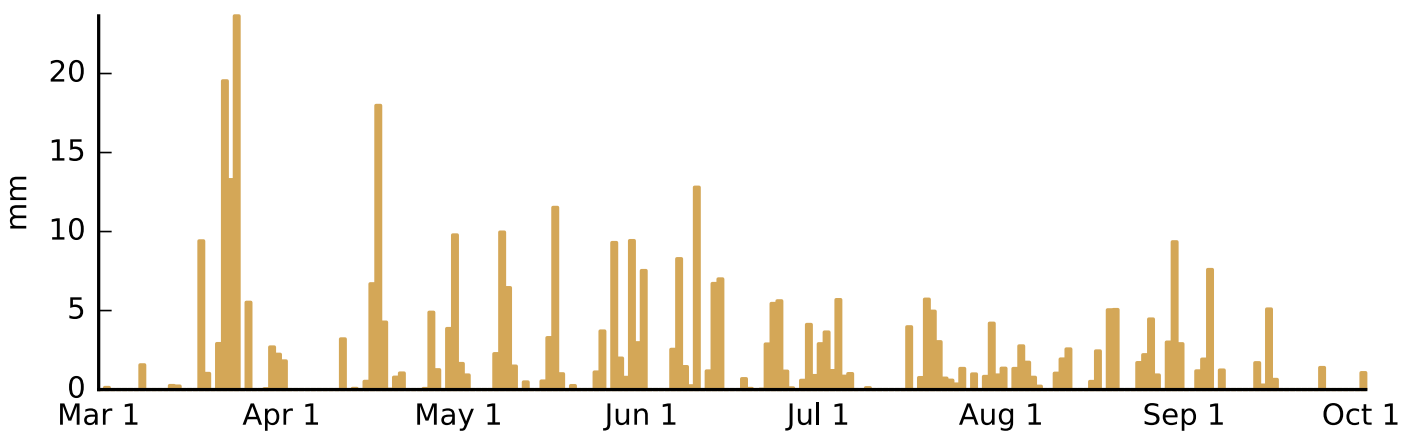
## ◆ Temperature

Lowest and highest daily temperature recorded during the day.



## ◆ Precipitation

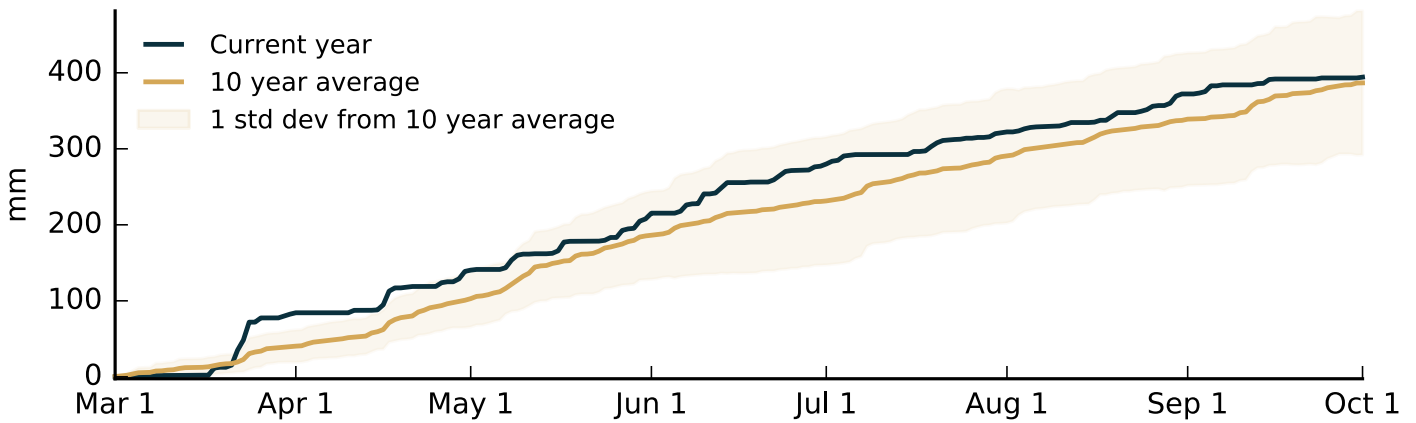
Daily precipitation from 2016-03-01 to 2016-10-01.





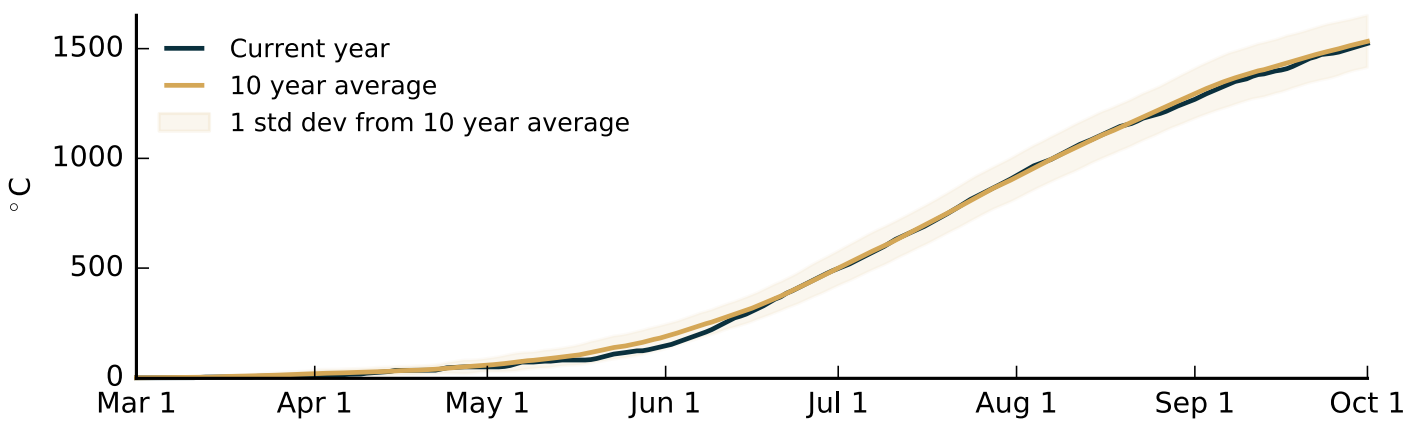
### ◆ Accumulated Precipitation

Current year, Previous year, 3-year average and the long-term average.



### ◆ Accumulated Growing Degree Days

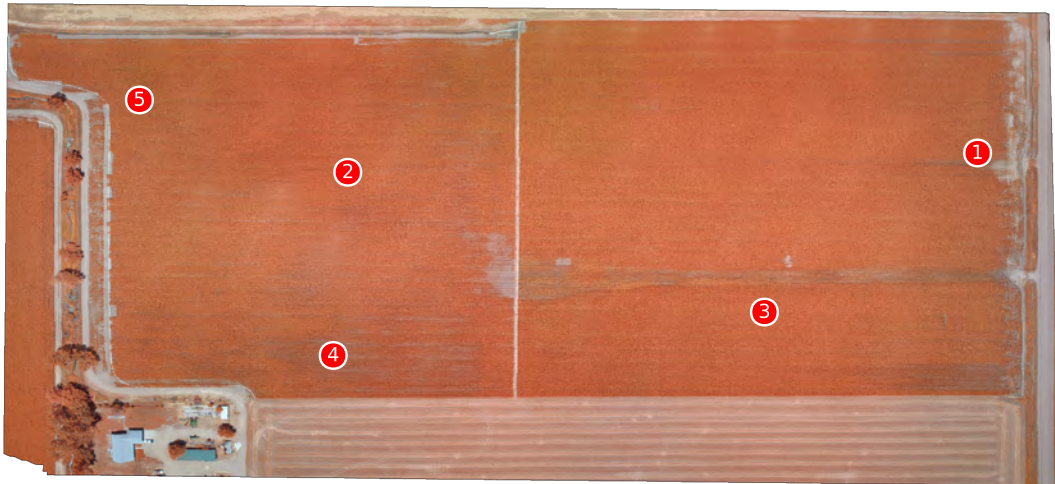
Growing Degree Days are calculated as the number of heat units achieved per day, based upon 'base' (baseTemp=10) and 'cap' (maxTempCap=33) temperature values. Total accumulated GDDs sum growing degree days across time.



## Field View - Infrared

This image is collected using a near infrared camera and then coloring is applied to highlight areas in the field that may need additional attention. Healthy vegetation reflects near infrared light, making near infrared imaging extremely useful for monitoring relative vegetation density and condition within your field.

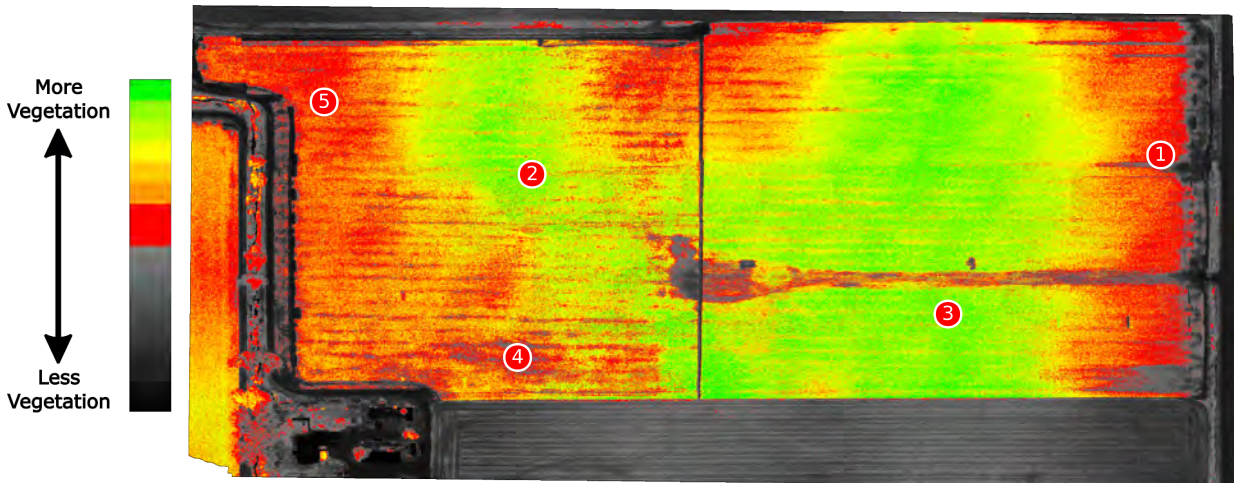
**Field Hectares: 23.07**



## Field Health Image (NDVI)

In this image we have used the colors of a traffic light, green showing the most dense sections of the field fading to yellow and then red and black indicating the areas with the least density. This image shows the health relative to the field as a whole.

**Field Hectares: 23.07**

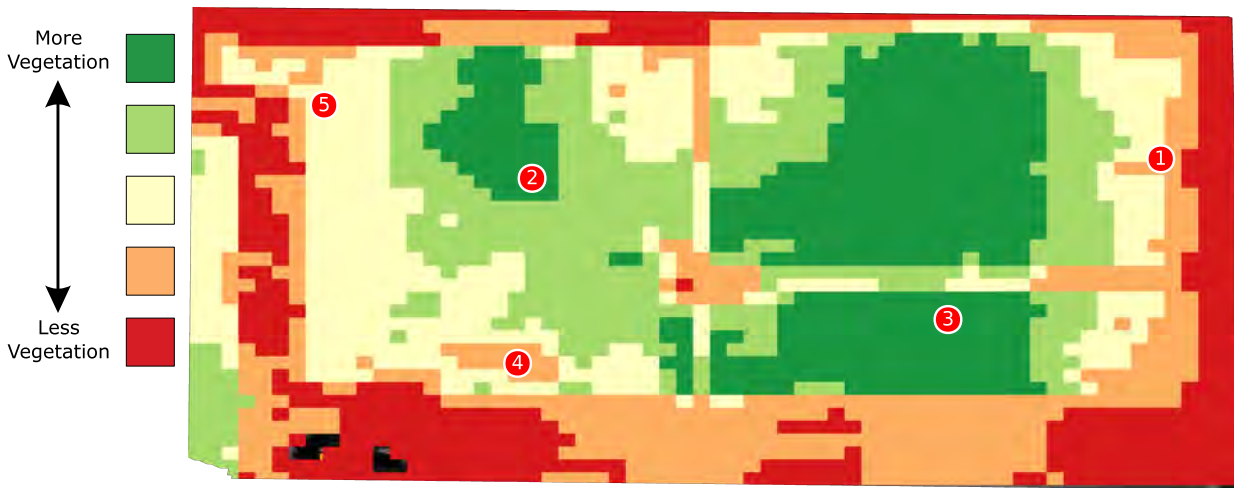




# Variable Application View

The Independent Ag Variable Application View is generated from the Infrared Guided Field Scouting View. The Management Zone Map contains the average value for each of the Management Zone Map's grid cells. The Management Zone Map is delivered in shapefile and Google Earth KMZ formats, and can be used as input to farm management software to generate prescriptions for variable rate application of inputs.

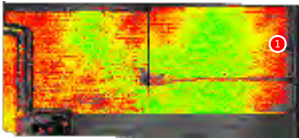
**Field Hectares:** 23.07



# Crop Scouting

## Location 1

This section shows locations scouted in the field, along with photos and comments.



Scout Marker 1 - #1



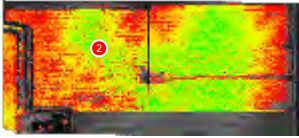
**Comments:**

Recessed growth along East edge with stalk damage

# Crop Scouting

## Location 2

This section shows locations scouted in the field, along with photos and comments.



Scout Marker 2 - #2



**Comments:**

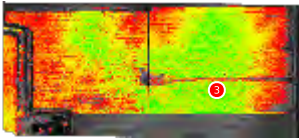
Vibrant growth corridor between less healthy zones, at approx. 80% of peak growth further East.



# Crop Scouting

## Location 3

This section shows locations scouted in the field, along with photos and comments.



Scout Marker 3 - #3





**Comments:**

Tall and vibrant throughout zone.



**Independent Ag**  
EQUIPMENT

 374 Heidlersburg Rd, PO Box 358 | Biglerville,  
PA 17307

 (717) 357-0836

 <http://www.independentag.com/>

 <https://www.facebook.com/IndependentAg>